

SPEC SHEET + MEASUREMENTS



OGIO® Verge Crew. OE326

Product photo



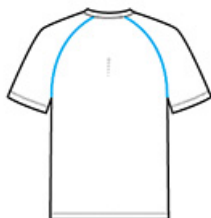
STAY-COOL WICKING
ULTRABREATHABLE
FLATLOCK SEAMS FOR COMFORT
REFLECTIVE DETAILS

- 4.4-ounce, 100% poly jersey with stay-cool wicking technology
- OGIO heat transfer label for tag-free comfort
- Raglan sleeves with contrast flatlock seams
- Contrast flatlock side seams
- Reflective O heat transfer on left sleeve
- Reflective stacked O heat transfers at center back
- Reflective O heat transfer at front left hem

Sketches



front



back

SPEC SHEET + MEASUREMENTS



OGIO® Verge Crew. OE326

PRODUCT MEASUREMENTS

	XS	S	M	L	XL	2XL	3XL	4XL
Body Length at Back	27	28	29	30	31	32	32 1/2	33
Chest	17 1/2	19	20 1/2	22	23 1/2	25	27	29
Sleeve Length	16	16 3/4	17 1/2	18 1/4	19	19 3/4	20 1/2	21 1/4

Body Length at Back: Measured from high point shoulder to finished hem at back.

Chest: Measured across the chest one inch below armhole when laid flat.

Sleeve Length: Start at center of neck and measure down shoulder, down sleeve to hem.

SIZE CHARTS

	XS	S	M	L	XL	2XL	3XL	4XL
Chest	32-34	35-37	38-40	41-43	44-46	47-49	50-53	54-57

HOW TO MEASURE



CHEST

Measure under the arm and around the fullest part of the chest with arms down, keeping tape horizontal.

SPEC SHEET + MEASUREMENTS



OGIO® Verge Crew. OE326

COLORS



Blacktop
Space Dye
PMS BLACK
C



Electric Blue
Space Dye
PMS 2145C



Pace Yellow
Space Dye